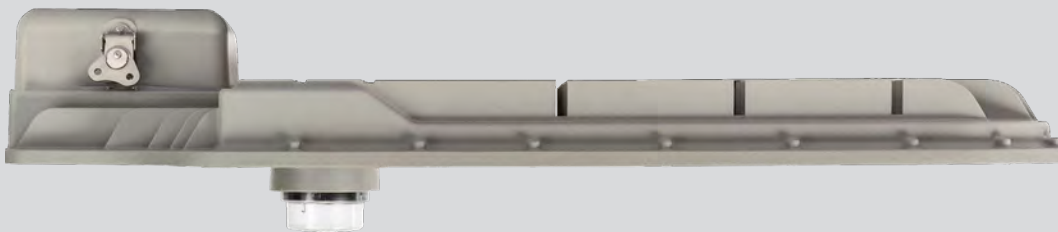


ALDRIDGE



V-LED MKII



LED Lighting for Major Roads and Tunnels



Aldridge Roadway Lighting Solutions

LED street lights improve energy efficiency and affordability for local government, improve road safety and support the Government's smart city agenda.

Aldridge Traffic Systems (ATS) design and produce state of the art, smart city ready vehicle and pedestrian LED lighting for major arterial roads, tunnels, underpasses, major intersections, low-traffic urban roads, public space and car parks.

ATS has the technology and experience required to obtain the best illumination results for safe night time motoring - in all road conditions. Together with energy cost savings which far exceed expectations, ATS provide a total lighting solution for the safety of all road users and pedestrians.

ATS are involved with prominent roadway and pedestrian lighting projects throughout Australia and worldwide. ATS products and LED lighting systems utilise the latest technology, which can be customised to provide the most effective and efficient lighting schemes which comply with the requirements of Australian Standard AS/NZS1158 for both vehicle and pedestrian (V and P Categories). Our design service employs advanced technologies along with NATA photometric data in order to provide the best solutions to meet the most stringent lighting requirements.

Our experienced delivery team design, audit, deliver, install and maintain in all facets of this exciting industry.

This comprehensive brochure will make it easy to identify product options and to match Aldridge luminaires and lamp technology to your specific project.

Contact our sales team to discuss your next project:

+61 2 9701 9900 or info@aldridgetraffic.com.au



Highways
Major Roads
Tunnels
Underpasses



V-LED

'V-LED' – Gold Coast

V-LED MKII

The V-LED MKII is a High Performance, Energy Efficient, Tunnel and Underpass Lighting Luminaire. Designed with an advanced LED Optical System, that sets new standards for 'V' Category Roadway Lighting. Proudly Designed in Australia by ATS.



APPLICATIONS

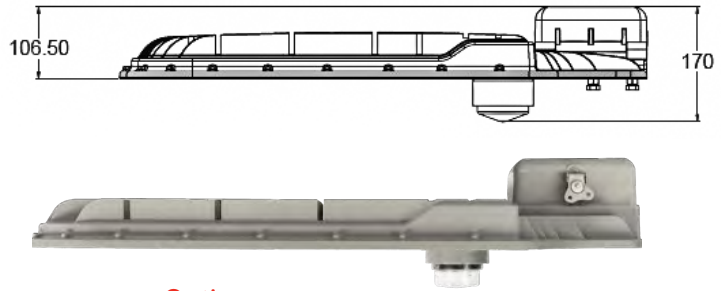
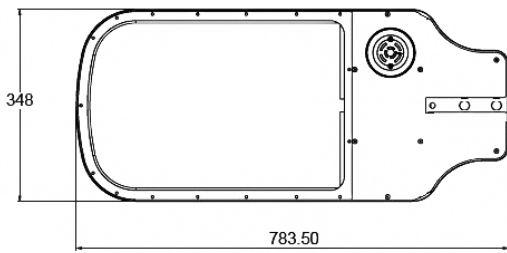
- Tunnels
- Underpasses
- Freeways
- Expressways
- Highways
- Motorways

'V-LED' Installation – Tasman Bridge, Tasmania

Specification V-LED MKII

PRODUCT CODE	V65W	V75W	V85W	V100W	V128W	V137W	V155W
Photometric Distribution	T5	T5	T5	T2, T3, T5FT	T2, T3, T5FT	T5FT	T5FT
Power Watts (W)	65W	70W	80W	100W	128W	137W	155W
Input Voltage (V)	220V - 240V 50/60Hz	220V - 240V 50/60Hz	220V - 240V 50/60Hz	220V - 240V 50/60Hz	220V - 240V 50/60Hz	220V - 240V 50/60Hz	220V - 240V 50/60Hz
CCT (K)	3000K/ 4000K/ 5000K	3000K/ 4000K/ 5000K	3000K/ 4000K/ 5000K	3000K/ 4000K/ 5000K	3000K/ 4000K/ 5000K	3000K/ 4000K/ 5000K	3000K/ 4000K/ 5000K
CRI (Ra)	Ra>70	Ra>70	Ra>70	Ra>70	Ra>70	Ra>70	Ra>70
IP Protection	IP66	IP66	IP66	IP66	IP66	IP66	IP66
IK Protection	IK06	IK06	IK06	IK06	IK06	IK06	IK06
Weight (Kg) Remote Gear: Less 1.8Kg	<10kg	<10kg	<10kg	<12kg	<12kg	<12kg	<12kg

Dimensions



Features

- Smart City Ready - TST compatibility Zigbee, LoRa, NBLoT
- High Performance roadway luminaire designed to meet stringent Australian/New Zealand road lighting standard, AS/NZS 60698.2.3 & AS/NZS TS 1158.6
- High Performance Optics designed to comply and meet Australian standards AS1158-1.1 Cat V
- Direct replacement of conventional V - category High Pressure Sodium and Metal Halide luminaires
- Aero screen (std) diffuser
- Integrated thermal management
- Segregated termination chamber c/w quick access
- 20 year Design Life
- 10 year warranty

Technical Data

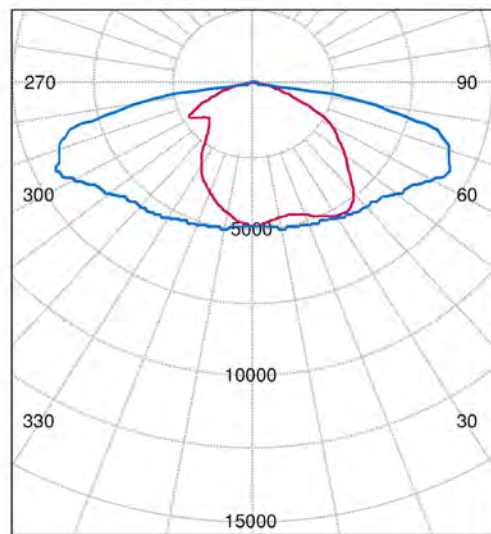
- Body:** High Pressure Marine Grade Die Cast Aluminum
- Optics:** Type **5 (Standard)**, 2 - 3, 5FT (Forward Throw)
- LED:** CREE
- Wattage:** 65 - 75 - 85 - 100 - 128 - 137 - 155 - 175 - 198 - 200 - 205 - 265 - 298 - 300 Watts
- Finishing:** Powder Coat (Grey Standard)
- Mounting:** 9 - 15 Metres
- Fixing:** Side Spigot Mount (32-40mm NB) (49mm OD)
- IP rating:** IP66
- IK rating:** IK06
- Voltage:** 220V - 240V 50/60Hz
- Power Factor:** >0.9

Options

- Photocell:** 7-pin Nema receptacle (7PN)
- DALI-2**
- Fuse Terminal Block:** (FTB)
- Surge Protection Device:** (SPD - 10KVA, 20KVA)
- Class II:** (DB - Double Insulated)
- Colour:** Black (BL), Grey (GR - Standard)
- CCT:** 3000K, **4000K (Standard)**, 5000k
- Visor:** Glare shield/spill light kit (GV)
- Remote Gear:** (RG)
- 5 Deg Tilt Adjustment Adapter (5TA)



Photometric Design Data



cd/klm
 — CO-C180
 — C90-C270

Specification V-LED MKII - Cont.

PRODUCT CODE	V175W	V198W	V200W	V205W	V265W	V298W	V300W
Photometric Distribution	T5	T2, T3	T2, T3, T5FT	T2, T3, T5FT	T5	T2, T3	T5FT
Power Watts (W)	175W	198W	200W	205W	240W	250W	300W
Input Voltage (V)	220V - 240V 50/60Hz	220V - 240V 50/60Hz	220V - 240V 50/60Hz	220V - 240V 50/60Hz	220V - 240V 50/60Hz	220V - 240V 50/60Hz	220V - 240V 50/60Hz
CCT (K)	3000K/ 4000K/ 5000K	3000K/ 4000K/ 5000K	3000K/ 4000K/ 5000K	3000K/ 4000K/ 5000K	3000K/ 4000K/ 5000K	3000K/ 4000K/ 5000K	3000K/ 4000K/ 5000K
CRI (Ra)	Ra>70	Ra>70	Ra>70	Ra>70	Ra>70	Ra>70	Ra>70
IP Protection	IP66	IP66	IP66	IP66	IP66	IP66	IP66
IK Protection	IK06	IK06	IK06	IK06	IK06	IK06	IK06
Weight (Kg) Remote Gear: Less 1.8Kg	<12kg	<12kg	<12kg	<12kg	<12kg	<12kg	<12kg

P. Cat Residential Roads

P. Cat.

PLED II



FLAT S



FLAT M



FLAT L



Decorative

COMO C



COMO P



COMO S



COMO T



Decorative

BOSTON TE



BOSTON SE



TASMAN



BERLIN



V. Cat Highways and Major Roads

V. Cat.

V-LED MKII



V-LED MKIII



Decorative

BOSTON V



High Mast

H-LED



E-LED



Tunnels and Underpasses

Security

S-LED



Flood

FLUD



FLUD X



T-LED



V. Cat.

V-LED MKII



V-LED MKIII





Aldridge Traffic Systems Pty Ltd

Unit 38, 38-46 South Street
Rydalmere NSW 2116
www.trafficltd.com.au

NSW

P: +61 2 9701 9900
e: info@trafficltd.com.au

VIC

P: +61 3 9430 0222
e: info@trafficltd.com.au

SA

P: +61 3 9430 0266
e: info@trafficltd.com.au

NT

P: +61 8 8947 0733
e: info@trafficltd.com.au

ACT

P: +61 2 6299 7922
e: info@trafficltd.com.au

WA

P: +61 8 9248 1002
e: info@trafficltd.com.au

QLD

P: +61 7 3184 2000
e: info@trafficltd.com.au

TAS

P: +61 3 6273 1177
e: info@trafficltd.com.au

UNITED KINGDOM

P: +44 (0) 1159 223 797
e: info@aldridgetraffic.co.uk

