

## EVOLIS

### European Designed & Manufactured

With more than 8000 units installed world-wide, the **Evolis Speed Indication Device** is the product of choice for an all in one radar and data collection device. Not only does it present a sleek European design, it has also been built using the best components giving it a reputation for being one of the most energy efficient and reliable units in the market.

The Evolis Speed Indication Device is easily configured and installed to educate motorists of their travel speeds. It helps to reduce overall excess traffic speeds, particularly in high incident areas. Utilising the optional built in data logger, road asset owners can gather and analyse traffic speed data on specific roads so that they can make informed planning decisions on road safety.



### FEATURES & BENEFITS

- Anti-corrosion, anti-UV treatment plus unit sealing ensures long term resistance, strength and durability
- Injected ABS resin waterproof housing with integrated hooks
- Lockable permanent mounting bar made of injected ABS resin, mounted on poles with brackets (sold separately)
- Front face made of tough polycarbonate, fixed to the casing with mechanical clip and gasket seal
- Waterproof IP66 housing for 2 batteries, USB port, dial selector and adaptor
- Installed in minutes by one person
- Optional 1 or 2 way traffic flow statistics
- Optional pre-configured speed/text display settings prior to installation
- Accompanying EVOCOM software for settings configuration plus data analysis
- 34cm high speed digits (red/amber/green), a large amber text template and ultra-high brightness LEDs



# EVOLIS

## Radar Sensor

Doppler Radar:	24.125 Ghz
Detection range:	10-250 metres
Detection angle:	17 °
Accuracy:	+/- 1km/h (travelling at 100km/h)

## Display

LED:	3 digits
Colors:	Red, Amber and Green
Size of digits:	340mm 640mm x 160mm (64 x 16 pixels)
Text display (Matrix):	1 line of 7 characters 160mm high 2 lines of 10 characters 70mm high
Visibility:	250m
Refresh:	1.2 seconds (configurable)

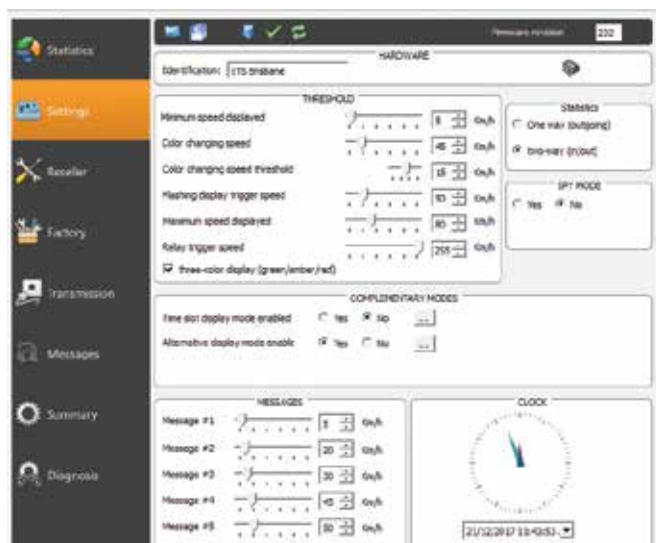
## Housing

Dimensions:	H: 700mm x W: 709mm x D: 170mm
Housing:	Injected ABS resin, grey RAL 7035
Front face:	Polycarbonate
Waterproof:	IP66
Weight:	8kg (without batteries)

## EVOCOM SOFTWARE

Evocom PC software, provided free of charge, is featured with a user-friendly interface for advanced configuration: specific speed ranges, speed increments, data recording function (\*), text messages, time slots etc...

(\*)Data recording function (one way / two way traffic flow statistics) purchased separately.



Settings configuration screen



## Optional Extras

- Bluetooth Connection
- 3G Connection
- One way Traffic Flow Statistics
- Two way Traffic Flow Statistics